

# CAR WRAPS®

**Our expertise in this area ensures your Car Wrap will not only look great but generate the brand awareness your business deserves.**

**We have wrapped over 200 vehicles and counting.**

## **About Us**

Our years of experience in this field means we have wrapped many different vehicles for fortune 500 companies.

We are competitive in pricing and use the highest quality materials.

We provide a turnkey solution including design, print, install, & removal.

## **The Car Wraps® Difference**

We do one thing only

We use 3M premium materials for all of our long term wraps. There are cheaper materials out there but we've found 3M to be the most versatile

We use 3M window perforated material for all windows of you vehicle wrap.

## **Our 4 Step Quality Assurance Process:**

1. Design & Measurements
2. Pre-Press Graphic Checks - Ensure all files are high resolution and suitable for printing
3. Print & Lamination
4. Installation ( We use certified installers only)

## **Markets:**

Toronto, Vancouver, Montreal, Calgary, Edmonton, Winnipeg, Ottawa, Halifax, PEI, Newfoundland etc.

## **Rates:**

For fleets our multi-vehicle wraps please contact your Account Manager or email us [wrapmycar@carwraps.ca](mailto:wrapmycar@carwraps.ca)

# Rates



## Fleets

For fleets or multiple vehicles please contact sales for a customized quote.

## Design

We can create a design for you should you require it.

We have 2 design options.

**Layout Option-** Client supplies all elements in print ready high resolution formats and we create the layout for you.

Cost: \$250 (4 hours of design time)

**Design From Scratch-** We will create a design, source and purchase stock images, and create a print ready layout.

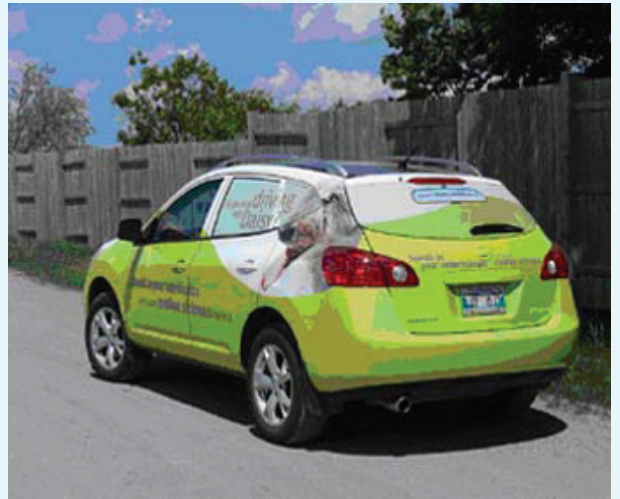
Cost: \$550 (8 hours of design time)

- \* Taxes extra
- \* Roof extra
- \* 50% deposit due on booking, balance COD
- \* Rates subject to change, Premiums may apply in some markets
- \* Lead time is 2 weeks from finalized artwork, installation is 1-2 days.
- \* Shipping extra



# Design Process

from **Concept** >>



>> to **Creation**

# Car Wrap Process:

1. Order Confirmed with signed booking form
2. 50% deposit due before design or printing
3. Design Process starts  
10 days for full design, 5 days for layout  
*Or*  
If Providing design we will supply template
4. Receipt of Artwork, Vehicle Measured, Queued for Print (10 days)
5. Arrange for installations 1-2 days

**\*From receipt of art work it is 10 days to print and 1-2 days for installation.**

**\* Rush service (15%) charges may apply for jobs with shorter lead times**

**\*All timings are estimates and are subject to vary**



# CarWraps® Warranty

## **Vinyl Car Wraps:**

3 years coverage against fading, chipping, ripping. CarWraps will repair and maintain the integrity of the wrap during the warranty period.

## **Window Wraps:**

All windows will be covered for a period of 1 year against chipping, fading, and ripping.

## **Normal Wear/Tear:**

CarWraps will not cover small peels as this is part of normal wear for all Car Wraps.

**For more information please refer to you how to care guide.**

# Pre-Press Specs

Our in-house designers and pre-press departments can provide high quality ready-to-print digital artwork. However, in order to best serve you and execute your job quickly, please follow these general guidelines.

## Media Formats

**CD (All Files to be provided on CD and shipped to Southwood Graphics)**

## Software

Adobe Photoshop 5.0+  
Adobe Illustrator 8.0 +

## Bumpers/Plastic Handles:

Some plastic bumpers and handles may not be suitable for wrapping. Please inquire with your Account Guru before designing.

## Placed Images

Assembled files need to be accompanied by all updated placed images. For example, if you have assembled your file in QuarkXpress and have placed images, those placed images need to be included in the format in which they were originated. All file elements should be provided as separate files and layers unflattened.

## Design Elements:

Please provide all files (logos, images, text/fonts) as separate files in their original formats.

## Design Suggestions:

Do not place important images, logos, text within 10" of any edge, wheels, window, handles, or other obstacle that may get cut off during installation process.

## Colours

All colours need to be in CMYK format. All pantone numbers should be supplied in written form for reference. All black must be in four colour black which is created using the following values: 60% cyan, 60% magenta, 60% yellow, and 100% black.

## Target Proofs

A proof of your image should always be supplied for colour and placement reference.

## Fonts

Please include all fonts. Convert all fonts/text to outlines or paths.

## Layout

For best results assemble your file at a scale of 1 inch = 1 foot. For example if your output size is 10' x 20' you would assemble your computer file to be 10" x 20".

## Image DPI

300-600 DPI @ File size (i.e before enlarging)  
100 DPI @ Final Size (minimum)

Questions?

Contact Production at:

**WrapMyCar@carwraps.ca**